

3117. OCCUPATIONAL FIELD 13, ENGINEER, CONSTRUCTION, FACILITIES, AND EQUIPMENT

1. Introduction. The Engineer, Construction, Facilities, and Equipment OccFld comprises Marines whose duties include metalworking and welding; repair, maintenance, and operation of engineer heavy equipment such as cranes and bulldozers; construction and repair of military structures and facilities; clearing and emplacing obstacles such as minefields; construction of standard and nonstandard bridging; and emplacing and detonating explosives for construction and demolition projects. Also, some Marines in the field work with the storage and distribution of bulk fuel products. Marines entering the field receive MOS 1300, Basic Engineer, Construction, and Equipment Marine. The Basic Engineer may be assigned a variety of MOSs and may be sent to a variety of formal schools. The MOSs that is initially available is Metal Workers, Engineer Equipment Mechanics, Engineer Equipment Operators, Combat Engineers, Engineer Assistants, and Bulk Fuel Specialists. The opportunity to participate in a formal apprenticeship program leading to receipt of a Department of Labor Certificate of Apprenticeship Completion may be available in some MOSs within OccFld 13. There are a variety of challenging and interesting billets available in OccFld 13, ranging from inspector-instructor duty, to duty with operating forces (in division, Marine Logistics Group, or Marine Air Wing) or the supporting establishment.

2. MOS 1316, Metal Worker (SSgt to Pvt) PMOS

a. Summary. Metal Workers examine drawings and work orders; determine sequence of operations, materials, tools, equipment, time, and personnel required. They also perform installation, operation, maintenance and repair of metalworking, and welding equipment and material.

b. Prerequisites

- (1) Must possess an MM score of 95 or higher.
- (2) Meet the physical requirements of reference (ax).

c. Requirements. Complete the Basic Metal Workers Course, Marine Corps Detachment, U.S. Army Ordnance School, Ft Lee, VA.

<u>CID</u>	<u>TITLE</u>	<u>LOCATION</u>
A14AC76	Metal Worker	
A141326	Basic Metal Worker (USMC)	

d. Duties. For a complete listing of duties and tasks, refer to reference (1), Marine Corps Engineer and Utilities Training and Readiness Manual.

e. Related Standard Occupational Classification (SOC) Title and Code

- (1) Welders, Cutters, Solders, and Brazer Workers 51-4121.
- (2) Sheet Metal Workers 47-2211.
- (3) First-Line Supervisors/Managers of Construction Trades and Extraction Workers 47-1011.

(4) Welding, Soldering and Brazing Workers 51-4120.

f. Related Military Skill. Aircraft Welder, 6043.

3. MOS 1341, Engineer Equipment Mechanic (SSgt to Pvt) PMOS

a. Summary. Engineer Equipment Mechanics perform preventive maintenance and perform repairs to diesel engines and gasoline and diesel driven construction equipment such as material handling equipment, earth moving equipment, construction equipment and other engine driven or towed equipment.

b. Prerequisites

(1) Must possess an MM score of 95 or higher.

(2) Meet the physical requirements of reference (ax).

(3) Must have normal color vision.

c. Requirements. Complete the Basic Engineer Mechanic Course, Marine Corps Detachment, U.S. Army Engineer School, Ft Leonard Wood, MO.

<u>CID</u>	<u>TITLE</u>	<u>LOCATION</u>
A1613B1	Construction Equipment Repairer	Ft Leonard Wood, MO

d. Duties. For a complete listing of duties and tasks, refer to reference (1), Marine Corps Engineer and Utilities Training and Readiness Manual.

e. Related Standard Occupational Classification (SOC) Title and Code

(1) Bus and Truck Mechanics and Diesel Engine Specialists 49-3031.

(2) First-Line Supervisors/Managers of Construction Trades and Extraction Workers 47-1011.

(3) First-Line Supervisors/Managers of Mechanics, Installers, and Repairers 49-1011.

(4) Mobile Heavy Equipment Mechanics, Except Engines 49-3042.

(5) Maintenance Workers, Machinery 49-9043.

(6) First-Line Supervisors/Managers of Transportation and Material-Moving Machine and Vehicle Operators 53-1031.

f. Related Military Skill

(1) Automotive Mechanic 3521.

(2) Main Battle Tank Repairer/Technician, 2146.

4. MOS 1342, Small Craft Mechanic (SSgt to LCpl) NMOS (1341)

a. Summary. Small Craft Mechanics perform preventive maintenance and repairs to bridge erection boats and rubber-hulled vessels; repair diesel

engines, outboard engines and hydro jet propulsion systems; and repair small craft trailers and cradle systems.

b. Prerequisites. Must be qualified in MOS 1341.

c. Requirements. Complete the Small Craft Mechanics Course, Small Boat Training Detachment, Marine Corps Engineer School, Camp Lejeune, NC.

<u>CID</u>	<u>TITLE</u>	<u>LOCATION</u>
M03EAW2	Small Craft Mechanic	Camp Lejeune, NC

d. Duties. For a complete listing of duties and tasks, refer to reference (1), Marine Corps Engineer and Utilities Training and Readiness Manual.

e. Related Standard Occupational Classification (SOC) Title and Code

- (1) Motorboat Mechanic 49-3051.
- (2) Outdoor Power Equipment and other Small Engine Mechanics 49-3053.
- (3) Maintenance Workers, Machinery 49-9043.

f. Related Military Skill. Engineer Equipment Mechanic, 1341.

5. MOS 1345, Engineer Equipment Operator (SSgt to Pvt) (PMOS)

a. Summary. Engineer Equipment Operators operate gasoline or diesel engine equipment used in material handling and earthmoving operations, to include all equipment accessories.

b. Prerequisites

- (1) Must possess an MM score of 95 or higher.
- (2) Must meet the licensing requirements of reference (ax).

c. Requirements. Complete the Engineer Equipment Operator Course, Marine Corps Detachment, U.S. Army Engineer School, Ft Leonard Wood, MO.

<u>CID</u>	<u>TITLE</u>	<u>LOCATION</u>
A1613F1	Engineer Equipment Operator	Ft Leonard Wood, MO

d. Duties. For a complete listing of duties and tasks, refer to reference (1), Marine Corps Engineer and Utilities Training and Readiness Manual.

e. Related Standard Occupational Classification (SOC) Title and Code

- (1) First-Line Supervisors/Managers of Construction Trades and Extraction Workers 47-1011.
- (2) First-Line Supervisors/Managers of Mechanics, Installers, and Repairers 49-1011.
- (3) Bus and Truck Mechanics and Diesel Engine Specialists 49-3031.

(4) Mobile Heavy Equipment Mechanics, Except Engines 49-3042.

(5) Maintenance Workers, Machinery 49-9043.

(6) First-Line Supervisors/Managers of Transportation and Material-Moving Machine and Vehicle Operators 53-1031.

f. Related Military Skill. Engineer Equipment Mechanic, 1341.

6. MOS 1349, Engineer Equipment Chief (MGySgt to GySgt) PMOS

a. Summary. Engineer Equipment Chiefs manage the activities of enlisted personnel performing engineer equipment operation, maintenance, and repair.

b. Prerequisites

(1) Must possess an MM score of 95 or higher.

(2) Possess experience in either MOS 1316, 1341, or 1345.

c. Requirements

(1) Completion of the Engineer Equipment Chief Course, U.S. Army Engineer School, Ft Leonard Wood, MO is required within one year after selection to the grade of Gunnery Sergeant, unless assigned outside the MOS in a non-FMF command such as recruiting/MSG duty. In these cases, after reassignment to a billet requiring MOS 1349.

(2) Skill progression schools/courses recommended for Engineer Equipment Chiefs include: see Fig 3-1.

<u>CID</u>	<u>TITLE</u>	<u>LOCATION</u>
A1613E1	Engineer Equipment Chief (USMC)	Ft Leonard Wood, MO

d. Duties. For a complete listing of duties and tasks, refer to reference (1), Marine Corps Engineer and Utilities Training and Readiness Manual.

e. Related Standard Occupational Classification (SOC) Title and Code

(1) First-Line Supervisors/Managers of Construction Trades and Extraction Workers 47-1011.

(2) First-Line Supervisors/Managers of Mechanics, Installers, and Repairers 49-1011.

(3) First-Line Supervisors/Managers of Transportation and Material-Moving Machine and Vehicle Operators 53-1031.

(4) First-Line Supervisors/Managers of All Other Tactical Operations Specialist 55-2013.

f. Related Military Skill. Motor Transport Maintenance Chief, 3529.

7. MOS 1361, Engineer Assistant (GySgt to Pvt) PMOS

a. Summary. Engineer Assistants perform various duties incidental to construction design, planning, estimating, and management. Personnel assigned this MOS are trained to use optical reading/electronic total station survey instruments to establish the horizontal and vertical alignment/layout for construction projects. In addition, they are trained to use manual/Computer Aided Drafting (CAD) methods of preparing architectural/mechanical/civil drawings, to include computations for bills of material/earthwork volumes.

b. Prerequisites. Must possess a GT score of 100 or higher.

c. Requirements

(1) High school courses in geometry and algebra are required. High school courses in trigonometry are desired.

(2) Complete the Technical Engineering Course, U.S. Army Engineer School Ft Leonard Wood, MO.

(3) Upon promotion to Master Sergeant, Engineer Assistants are assigned MOS 1371. As such, completion of the Engineer Operations Chief Course is required within one year after selection to the grade of Master Sergeant, unless assigned outside the supporting establishment in a B billet, such as recruiting/MSG duty. In these cases, after reassignment to a billet requiring MOS 1371, Marines will attend this course within six months.

<u>CID</u>	<u>TITLE</u>	<u>LOCATION</u>
A1614D1	Technical Engineering (USMC)	Ft Leonard Wood, MO

d. Duties. For a complete listing of duties and tasks, refer to reference (1) Marine Corps Engineer and Utilities Training and Readiness Manual.

e. Related Standard Occupational Classification (SOC) Title and Code

- (1) Architectural and Civil Drafters 17-3011.
- (2) Surveying and Mapping Technicians 17-3031.
- (3) Surveyors 17-1022.

f. Related Military Skill

- (1) Topography Intelligence Specialist, 0261.
- (2) Combat Engineer, 1371.

8. MOS 1371, Combat Engineer (MGySgt to Pvt) PMOS

a. Summary. Combat Engineers conduct engineer reconnaissance; emplace obstacle systems; conduct breaching operations, to include reducing explosive hazards; conduct mine/countermine operations; employ demolitions and military explosives; conduct urban breaching; conduct route clearance; provide assault bridging, tactical bridging and non-standard bridging/repair; construct and

maintain combat roads and trails; construct expedient roads and airfield/landing zones; design and construct survivability positions; perform expedient vertical and horizontal construction; design, construct and maintain base camps/forward operating bases and combat outposts; and fight as provisional infantry.

b. Prerequisites. Must possess an MM score of 95 or higher.

c. Requirements

(1) Complete the Basic Combat Engineer Course, Marine Corps Engineer School, Camp Lejeune, NC.

(2) Completion of Engineer Operations Chief Course is required upon promotion to MSgt.

(3) Skill progressions schools/courses recommended for Combat Engineers include: see Fig 3-10.

<u>CID</u>	<u>TITLE</u>	<u>LOCATION</u>
M031302	Basic Combat Engineer	Camp Lejeune, NC

d. Duties. For a complete listing of duties and tasks, refer to reference (1), Marine Corps Engineer and Utilities Training and Readiness Manual.

e. Related Standard Occupational Classification (SOC) Title and Code

(1) Explosives Workers, Ordnance Handling Experts, and Blasters 47-5031.

(2) Cement Masons and Concrete Finishers 47-2051.

(3) Brick Masons and Block Masons 47-2021.

(4) Carpenters 47-2031.

f. Related Military Skill. Engineer Assistant, 1361.

9. MOS 1372, Assault Breacher Vehicle (ABV)/Armored Vehicle Launched Bridge (AVLB) Crewman (GySgt to LCpl) NMOS (1371)

a. Summary. The ABV/AVLB Crewman is a NMOS for PMOS 1371, Combat Engineer. Job tasks associated with operations of the ABV/AVLB Crewman will be those tasks required to drive the unit, operate the breaching/bridging systems, provide protection, and communicate. Operator/Crew level maintenance tasks will also be included.

b. Prerequisites

(1) Must be qualified in MOS 1371.

(2) Must possess a MM score of 95 or higher.

(3) Must have vision correctable to 20/20 and depth perception (third degree binocular fusion).

(4) Must be a minimum height of 66 inches.

(5) Must meet the licensing requirements of reference (ax).

c. Requirements. Complete the ABV Crewman Course, Marine Corps Detachment, Ft Benning, GA.

<u>CID</u>	<u>TITLE</u>	<u>LOCATION</u>
A03YH42	Assault Breacher Vehicle (ABV) Crewman (USMC)	Ft Benning, GA

d. Duties. For a complete listing of duties and tasks, refer to reference (1), Marine Corps Engineer and Utilities Training and Readiness Manual.

e. Related Standard Occupational Classification (SOC) Title and Code.  
Armored Assault Crew Members 55-3013.

f. Related Military Skill

(1) Tank Crewman, 1812.

(2) Combat Engineer, 1371.

10. MOS 1391, Bulk Fuel Specialist (MGySgt to Pvt) PMOS

a. Summary. Bulk Fuel Specialists install, operate, maintain and repair fuel handling units and accessory equipment, and test petroleum products to evaluate the quality used in amphibious assault fuel handling systems.

b. Prerequisites

(1) Must possess an MM score of 95 or higher.

(2) Must have normal color vision.

c. Requirements

(1) Complete the Bulk Fuel Specialist Course, Marine Corps Detachment, U.S. Army quartermaster School, Ft Lee, VA.

(2) Skill progression schools/courses available for bulk fuel specialists include: see Fig3-1.

<u>CID</u>	<u>TITLE</u>	<u>LOCATION</u>
A1430J1	Petroleum Supply Specialist	Ft Lee, VA
A141351	Bulk Fuel Specialist (USMC)	Ft Lee, VA

d. Duties. For a complete listing of duties and tasks, refer to reference (1), Marine Corps Engineer and Utilities Training and Readiness Manual.

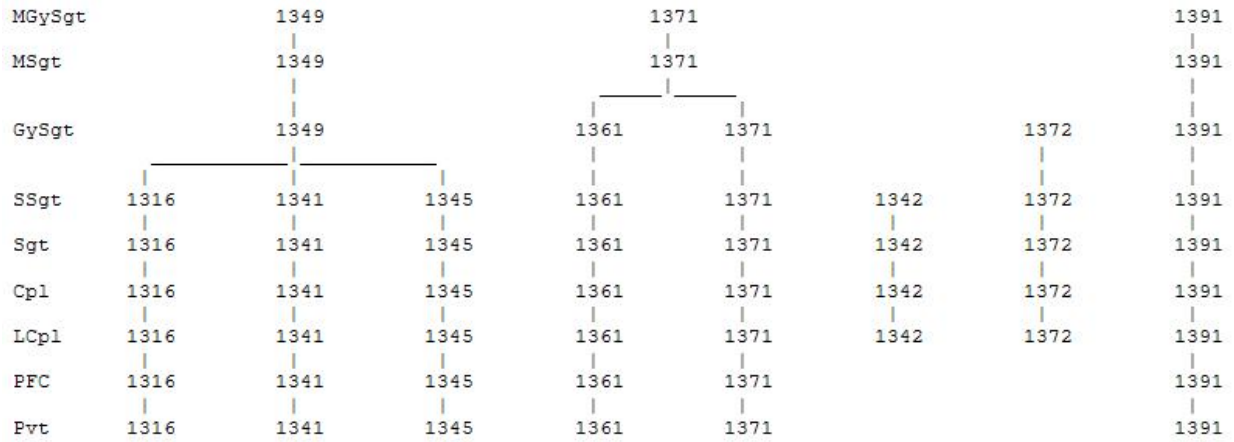
e. Related Standard Occupational Classification (SOC) Title and Code

(1) Pump Operators, Except Wellhead Pumpers 53-7072.

(2) Petroleum Pump System Operators, Refinery Operators, and Gaugers  
51-8093.

f. Related Military Skill. None.





MOS	Title
1316	Metal Worker (PMOS)
1341	Engineer Equipment Mechanic (PMOS)
1342	Small Craft Mechanic (NMOS)
1345	Engineer Equipment Operator (PMOS)
1349	Engineer Equipment Chief (PMOS)
1361	Engineer Assistant (PMOS)
1371	Combat Engineer (PMOS)
1372	Assault Breacher Vehicle (ABV)/Armored Vehicle Launched Bridge (AVLB) Crewman (NMOS)
1391	Bulk Fuel Specialist (PMOS)

Figure 3-10.--Engineer, Construction, Facilities, and Equipment

MOS 1316, Metal Worker (PMOS)

SSGT Required Training:  
Skill Progression:  
Skill Enhancement:  
MOS Assignment: **OPFOR:** Metal Worker Chief  
**SE:** Instructor MCES

-----  
SGT Required Training:  
Skill Progression:  
Skill Enhancement:  
MOS Assignment: **OPFOR:** Metal Worker  
**SE:** None

-----  
CPL Required Training:  
Skill Progression:  
Skill Enhancement:  
MOS Assignment: **OPFOR:** Metal Worker  
**SE:** None

-----  
LCPL Required Training: Basic Metal Worker Course  
Skill Progression:  
Skill Enhancement:  
MOS Assignment: **OPFOR:** Metal Worker  
**SE:** None

-----  
PFC Required Training: Basic Metal Worker Course  
Skill Progression:  
Skill Enhancement:  
MOS Assignment: **OPFOR:** Metal Worker  
**SE:** None

-----  
PVT Required Training: Basic Metal Worker Course  
Skill Progression:  
Skill Enhancement:  
MOS Assignment: **OPFOR:** Metal Worker  
**SE:** None

MOS 1341, Engineer Equipment Mechanic (PMOS)

SSGT Required Training:  
Skill Progression:  
Skill Enhancement: Soils Analysis Course  
MOS Assignment: **OPFOR:** Maintenance Chief  
**SE:** Instructor MCES/I&I Duty

-----  
SGT Required Training:  
Skill Progression:  
Skill Enhancement: Engineer Equipment Mechanic NCO Course  
MOS Assignment: **OPFOR:** Engineer Equipment Mechanic  
**SE:** None

-----  
CPL Required Training:  
Skill Progression:  
Skill Enhancement: Engineer Equipment Mechanic NCO Course

Figure 3-10.--Engineer, Construction, Facilities, and Equipment

	MOS Assignment:	<b>OPFOR:</b> Engineer Equipment Mechanic/ PEB Clerk <b>SE:</b> None
-----		
LCPL	Required Training: Skill Progression: Skill Enhancement: MOS Assignment:	Construction Equipment Repairer Course  <b>OPFOR:</b> Engineer Equipment Mechanic <b>SE:</b> None
-----		
PFC	Required Training: Skill Progression: Skill Enhancement: MOS Assignment:	Construction Equipment Repairer Course  <b>OPFOR:</b> Engineer Equipment Mechanic <b>SE:</b> None
-----		
PVT	Required Training: Skill Progression: Skill Enhancement: MOS Assignment:	Construction Equipment Repairer Course  <b>OPFOR:</b> Engineer Equipment Mechanic <b>SE:</b> None
-----		
<u>MOS 1342, Small Craft Mechanic (NMOS)</u>		
SSGT	Required Training: Skill Progression: Skill Enhancement: MOS Assignment:	<b>OPFOR:</b> Small Craft Mechanic <b>SE:</b> Instructor MCES/I&I Duty
-----		
SGT	Required Training: Skill Progression: Skill Enhancement: MOS Assignment:	Engineer Equipment Mechanic NCO Course <b>OPFOR:</b> Small Craft Mechanic <b>SE:</b> None
-----		
CPL	Required Training: Skill Progression: Skill Enhancement: MOS Assignment:	Engineer Equipment Mechanic NCO Course <b>OPFOR:</b> Small Craft Mechanic/PEB Clerk <b>SE:</b> None
-----		
LCPL	Required Training:  Skill Progression: Skill Enhancement: MOS Assignment:	Construction Equipment Repairer Course  Small Craft Mechanic Course  <b>OPFOR:</b> Small Craft Mechanic <b>SE:</b> None
-----		

Figure 3-10.--Engineer, Construction, Facilities, and Equipment  
(continued)

MOS 1345, Engineer Equipment Operator (PMOS)

SSGT	Required Training: Skill Progression: Skill Enhancement: MOS Assignment:	Soils Analysis Course <b>OPFOR:</b> Operations Chief <b>SE:</b> Instructor MCES/I&I Duty
-----		
SGT	Required Training: Skill Progression: Skill Enhancement: MOS Assignment:	Engineer Equipment Operator NCO Course <b>OPFOR:</b> Engineer Equipment Operator <b>SE:</b> None
-----		
CPL	Required Training: Skill Progression: Skill Enhancement: MOS Assignment:	Engineer Equipment Operator NCO Course <b>OPFOR:</b> Engineer Equipment Operator/ MIMMS Clerk <b>SE:</b> None
-----		
LCPL	Required Training: Skill Progression: Skill Enhancement: MOS Assignment:	Engineer Equipment Operator Course <b>OPFOR:</b> Engineer Equipment Operator <b>SE:</b> None
-----		
PFC	Required Training: Skill Progression: Skill Enhancement: MOS Assignment:	Engineer Equipment Operator Course <b>OPFOR:</b> Operations Chief/Maintenance Chief <b>SE:</b> Instructor MCES/I&I Duty
-----		
PVT	Required Training: Skill Progression: Skill Enhancement: MOS Assignment:	Engineer Equipment Operator Course <b>OPFOR:</b> Operations Chief/Maintenance Chief <b>SE:</b> Instructor MCES/I&I Duty
-----		

MOS 1349, Engineer Equipment Chief (PMOS)

MGYSGT	Required Training: Skill Progression:
--------	--

Figure 3-10.--Engineer, Construction, Facilities, and Equipment  
(continued)

Skill Enhancement:	<p>MCLEP</p> <p>Weapons and Tactics Instructor Course (WTI), taught by Marine Aviation Weapons and Tactics Squadron 1, Yuma, AZ.</p> <p>Marine Corps Logistics Education Program (MCLEP), taught by School of MAGTF Logistics and Penn State, State College, PA.</p> <p>Ground Safety Specialist Course, taught at various bases and stations.</p> <p>Hazardous Material/Hazardous Waste Staff NCO Course taught at various bases and stations.</p>
MOS Assignment:	<p><b>OPFOR:</b> Operations Chief/Maintenance Chief</p> <p><b>SE:</b> Instructor MCES/I&amp;I Duty</p>
-----	
MSGT	<p>Required Training: Skill Progression: Skill Enhancement:</p> <p>ALOC/JEOC</p> <p>Weapons and Tactics Instructor Course (WTI), taught by Marine Aviation Weapons and Tactics Squadron 1, Yuma, AZ.</p> <p>Marine Corps Logistics Education Program (MCLEP), taught by School of MAGTF Logistics and Penn State, State College, PA.</p> <p>Ground Safety Specialist Course, taught at various bases and stations.</p> <p>Hazardous Material/Hazardous Waste Staff NCO Course taught at various bases and stations.</p>
MOS Assignment:	<p><b>OPFOR:</b> Operations Chief/Maintenance Chief</p> <p><b>SE:</b> Instructor MCES/I&amp;I Duty</p>
-----	
GYSGT	<p>Required Training: Skill Progression:</p> <p>Engineer Equipment Chief Course</p>

Figure 3-10.--Engineer, Construction, Facilities, and Equipment  
(continued)

Skill Enhancement: TLOC

Weapons and Tactics Instructor Course (WTI), taught by Marine Aviation Weapons and Tactics Squadron 1, Yuma, AZ.

Marine Corps Logistics Education Program (MCLEP), taught by School of MAGTF Logistics and Penn State, State College, PA.

Ground Safety Specialist Course, taught at various bases and stations.

Hazardous Material/Hazardous Waste Staff NCO Course taught at various bases and stations.

MOS Assignment: **OPFOR:** Operations Chief/Maintenance Chief  
**SE:** Instructor MCES/I&I Duty

---

MOS 1361, Engineer Assistant (PMOS)

GYSGT Required Training: Engineer Operations Chief Course (M0313G2)

Skill Progression:

Skill Enhancement: IMLOC (M09F2F9)

MOS Assignment: **OPFOR:** Drafting and Surveying Chief/Operations Chief  
**SE:** Instruction USAEC

---

SSGT Required Training:

Skill Progression: Engineer Assistant Chief Course (A16EAV1)

Combat Engineer Platoon Sergeant Course (M03ACQ2)

Skill Enhancement:

MOS Assignment: **OPFOR:** Drafting Chief/Survey Chief  
**SE:** Instructor USAEC

---

SGT Required Training:

Skill Progression:

Skill Enhancement: Engineer Assistant Chief Course

MOS Assignment: **OPFOR:** Team Chief/Cadd Manager  
**SE:** Instructor USAEC

---

CPL Required Training:

Skill Progression:

Skill Enhancement: Engineer Assistant Chief Course

MOS Assignment: **OPFOR:** Draftsman/Surveyor  
**SE:** None

---

Figure 3-10.--Engineer, Construction, Facilities, and Equipment  
(continued)

LCPL	Required Training: Skill Progression: Skill Enhancement: MOS Assignment:	Technical Engineering Course   <b>OPFOR:</b> Draftsman/Surveyor <b>SE:</b> None
-----		
PFC	Required Training: Skill Progression: Skill Enhancement: MOS Assignment:	Technical Engineering Course   <b>OPFOR:</b> Draftsman/Surveyor <b>SE:</b> None
-----		
PVT	Required Training: Skill Progression: Skill Enhancement: MOS Assignment:	Technical Engineering Course   <b>OPFOR:</b> Draftsman/Surveyor <b>SE:</b> None
-----		
<u>MOS 1371, Combat Engineer (PMOS)</u>		
MGYSGT	Required Training: Skill Progression: Skill Enhancement: MOS Assignment:	Joint Engineer Operations Course <b>OPFOR:</b> MARFOR/MEF/MLG/MAW Engineer Chief <b>SE:</b> MCES Academic Chief/I&I Staff/HQMC I&L (LPE)
-----		
MSGT	Required Training: Skill Progression: Skill Enhancement:   MOS Assignment:	IMLOC (M09F2F9)  Joint Engineer Operations Course (JEOC)  Ground Operations Chief Course (GOCC) <b>OPFOR:</b> Engineer Chief <b>SE:</b> MCES Faculty/I&I Staff/MMEA (MOS Monitor)
-----		
GYSGT	Required Training: Skill Progression: Skill Enhancement: MOS Assignment:	<b>OPFOR:</b> DIV/MLG/MAW Engineer Chief/ Platoon Sergeant <b>SE:</b> MCES Instructor/I&I Staff
-----		
SSGT	Required Training: Skill Progression: Skill Enhancement:	Urban Breacher Course (M03KA92)  US Army SAPPER Leader Course

Figure 3-10.--Engineer, Construction, Facilities, and Equipment  
(continued)

	MOS Assignment:	<b>OPFOR:</b> DIV/MLG/MAW Engineer Platoon Sergeant/Guide <b>SE:</b> MCES Instructor
-----		
SGT	Required Training: Skill Progression: Skill Enhancement:	Urban Breacher Course (M03KA92)
	MOS Assignment:	US Army SAPPER Leader Course <b>OPFOR:</b> DIV/MLG/MAW Engineer Squad Leader <b>SE:</b> None
-----		
CPL	Required Training: Skill Progression: Skill Enhancement:	Urban Breacher Course (M03KA92)
	MOS Assignment:	<b>OPFOR:</b> Combat Engineer <b>SE:</b> None
-----		
LCPL	Required Training: Skill Progression: Skill Enhancement:	Basic Combat Engineer Course (M031302)
	MOS Assignment:	<b>OPFOR:</b> Combat Engineer <b>SE:</b> None
-----		
PFC	Required Training: Skill Progression: Skill Enhancement:	Basic Combat Engineer Course (M031302)
	MOS Assignment:	<b>OPFOR:</b> Combat Engineer <b>SE:</b> None
-----		
PVT	Required Training: Skill Progression: Skill Enhancement:	Basic Combat Engineer Course (M031302)
	MOS Assignment:	<b>OPFOR:</b> Combat Engineer <b>SE:</b> None
-----		

MOS 1372, Assault Vehicle Operator (NMOS)

GYSGT	Required Training: Skill Progression: Skill Enhancement:	
	MOS Assignment:	<b>OPFOR:</b> Combat Engineer Battalion, MAC Operations Chief/Platoon Sergeant <b>SE:</b> Instructor, MarDet Ft Benning, GA
-----		
SSGT	Required Training: Skill Progression: Skill Enhancement:	Engineer Platoon Sergeant
	MOS Assignment:	<b>OPFOR:</b> Combat Engineer Battalion, MAC Platoon Sergeant; ABV/AVLB Section Leader <b>SE:</b> Instructor, MarDet Ft Benning, GA
-----		

Figure 3-10.--Engineer, Construction, Facilities, and Equipment  
(continued)



SGT	Required Training: Skill Progression: Skill Enhancement: MOS Assignment:	<b>OPFOR:</b> ABV/AVLB Vehicle Commander <b>SE:</b> Instructor, MarDet Ft Benning, GA
-----		
CPL	Required Training: Skill Progression: Skill Enhancement: MOS Assignment:	<b>OPFOR:</b> ABV/AVLB Vehicle Commander/ Crewman <b>SE:</b> None
-----		
LCPL	Required Training:  Skill Progression: Skill Enhancement: MOS Assignment:	Basic Combat Engineer Course (M031302)  ABV/AVLB Crewman Course (A03YH42)  <b>OPFOR:</b> ABV/AVLB Crewman <b>SE:</b> None
-----		
<u>MOS 1391, Bulk Fuel Specialist (PMOS)</u>		
MGYSGT	Required Training: Skill Progression: Skill Enhancement:  MOS Assignment:	Fuel SNCO Advance Course  MCLEP  Joint Petroleum Seminar, DLA, Ft Belvoir, VA <b>OPFOR:</b> MWSG Fuel Chief/MFR Fuel Chief/MFR Fuel Chief <b>SE:</b> Fuel School Academic Coordinator/HQMC Fuel LNO
-----		
MSGT	Required Training: Skill Progression: Skill Enhancement: MOS Assignment:	Fuel SNCO Advance Course  ALOC/JEOC <b>OPFOR:</b> Fuel Chief/Operation Chief <b>SE:</b> Fuels Chief/I&I Duty/Fuel School Chief Instructor
-----		
GYSGT	Required Training: Skill Progression: Skill Enhancement: MOS Assignment:	Fuel SNCO Advance Course  TLOC/BSM-E Managers Course <b>OPFOR:</b> Platoon Sergeant/Fuel Chief <b>SE:</b> I&I Duty/Fuel School Instructor
-----		
SSGT	Required Training: Skill Progression: Skill Enhancement:	Fuel SNCO Advance Course  BSM-E Manager Course

Figure 3-10.--Engineer, Construction, Facilities, and Equipment  
(continued)

	MOS Assignment:	<b>OPFOR:</b> Squad Leader/Team Chief/ Quality Control Chief <b>SE:</b> Team Chief/Quality Control Specialist/Fuel School Instructor
-----		
SGT	Required Training: Skill Progression: Skill Enhancement:	BSM-E Basic Course
	MOS Assignment:	Petroleum Laboratory Course <b>OPFOR:</b> Section Leader/Quality Control Specialist <b>SE:</b> Section Leader/Quality Control Specialist
-----		
CPL	Required Training: Skill Progression: Skill Enhancement:	BSM-E Basic Course
	MOS Assignment:	Petroleum Laboratory Course <b>OPFOR:</b> Bulk Fuel Specialist/Squad Leader/Quality Control Specialist <b>SE:</b> Bulk Fuel Specialist/Section Leader/Quality Control Specialist
-----		
LCPL	Required Training: Skill Progression: Skill Enhancement:	Bulk Fuel Specialist Course
	MOS Assignment:	BSM-E Basic Course <b>OPFOR:</b> Bulk Fuel Specialist <b>SE:</b> Bulk Fuel Specialist
-----		
PFC	Required Training: Skill Progression: Skill Enhancement:	Bulk Fuel Specialist Course
	MOS Assignment:	<b>OPFOR:</b> Bulk Fuel Specialist <b>SE:</b> Bulk Fuel Specialist
-----		
PVT	Required Training: Skill Progression: Skill Enhancement:	Bulk Fuel Specialist Course
	MOS Assignment:	<b>OPFOR:</b> Bulk Fuel Specialist <b>SE:</b> Bulk Fuel Specialist
-----		

Figure 3-10.--Engineer, Construction, Facilities, and Equipment  
(continued)